

Road Inspection

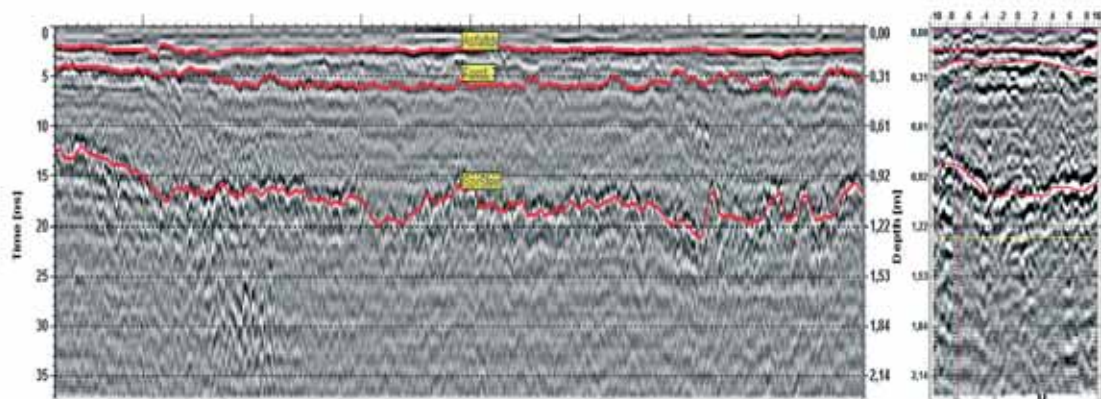
Using 3-Dimensional Ground Penetrating Radar

Do you really know the condition of the road subsurface? Road Maintenance is a multi-million dollar industry. Huge annual savings can be the result if you know where to maintain the road.

Our 3d GPR system is a powerful and flexible tool for road surveys. The GeoScope has been successfully applied for road inspection on several projects in Europe, US and Asia.

The high flexibility of the radar system makes it possible to use the same system, not only for high speed surveys using few channels, but also for detailed high resolution 3d imaging.

For the first time in GPR history it is possible to program the same instrument for both high speed pavement profile surveys and detailed 3d surveys of e.g. a bridge deck for high resolution images of subsurface voids and damages.



Road profile showing asphalt, base layer and foundation (crushed rocks).

Cross-slice.

Main benefits

- **Efficient mapping of roads and highways for maintenance planning**
- **Discover voids and irregularities in advance to avoid expensive repairs**
- **High resolution radar images for better decision support**
- **Software compatibility:**
 - RoadDoctor® (www.roadscanners.com)
 - ReflexW from Sandmeier (www.sandmeier-geo.de)